



# Welding **POSITIONERS**

---

Series **BE**

Series **PX**

Series **RO**

Series **RT**

Series **SPR**

# Increasing work **efficiency** by up **to 40%**

Positioners are mainly intended for positioning cumbersome and heavy items in order to achieve optimal working conditions and increase safety, efficiency, quality, and ergonomics for workers. The positioners we manufacture are designed to lift items weighing from 250 kg up to even 24 tons. Based on individual customer requirements, it is possible to design and manufacture manipulators with even greater load capacity.

## USEFUL FOR POSITIONING ELEMENTS IN:



**WELDING**



**CLEANING**



**ASSEMBLY**

Each of the positioners can be specifically made to meet individual customer requirements. The variety of BEAR positioner models allows for the perfect solution to be tailored to the specifics of our work. SPR, BE, and PX product lines are used for classic element positioning. The RO and RT lines were created to cooperate with robots of leading brands.

**BEAR** offers support in all activities related to the implementation of the supply of a comprehensive workstation:

- ✔ Analysis of customer needs and determination of detailed technical purposes
- ✔ Evaluation of possibilities and proposal of a technical solution
- ✔ Consultations with the customer, serious and quick negotiation of sales contracts
- ✔ Design, construction, and realization
- ✔ Testing, welding of test samples
- ✔ Assembly, training, handover to the customer

A high-performance hydraulic system is used to lift and tilt elements, whose safety is guaranteed by multi-stage protections. If necessary, positioners can be modified depending on requirements: table size, arm length, control system, rotation speed, etc.





# Benefits and advantages

## **FOR THE EMPLOYER:**

- Increasing work efficiency by up to 40% through optimal object positioning  
- this has resulted in a short payback time for the device
- Increasing production efficiency does not require additional space in the production hall
- Better quality of welded joints - always possible to weld in a downhand position
- Solid device construction ensures long-term, failure-free operation

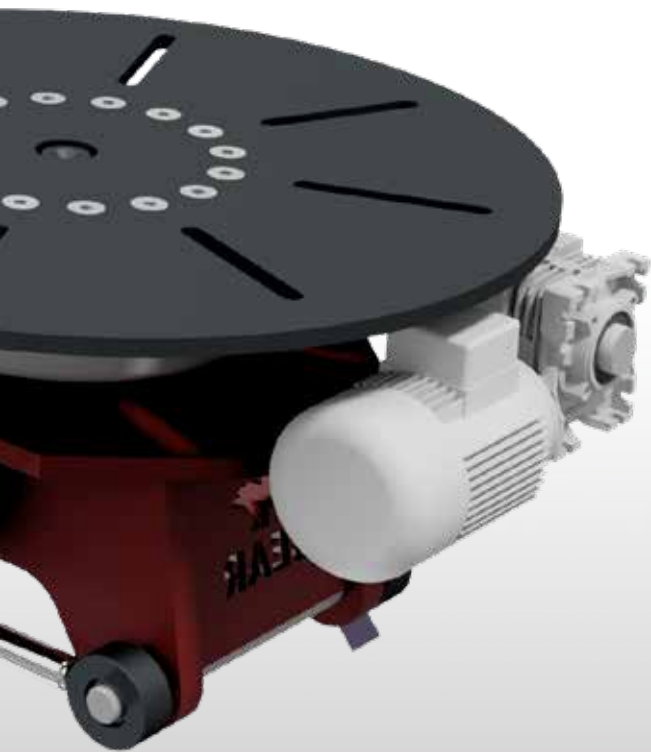
## **FOR THE OPERATOR:**

- Providing an ergonomic posture to the worker
- Minimizing accident chances, no changes to object fixation
- No work interruptions due to waiting for a crane
- Easy assembly and operation

## **AUTOMATION:**

- Possibility of cooperation of positioners with welding robots
- Possibility of placement on production lines





## Series **PX**

The PX series positioners allow for the safe lifting, rotation, and tilting of elements to an optimal position for welding or assembly.

The tilt cylinders are protected by a metal casing, which protects them from mechanical damage or any potential splashes created during welding.



### Standard Version

- Positioner powered by three-phase current
- Table rotation by an electric turntable
- Arm height and table tilt adjustment using hydraulic cylinders
- Control of functions on the positioner housing

### Additional options

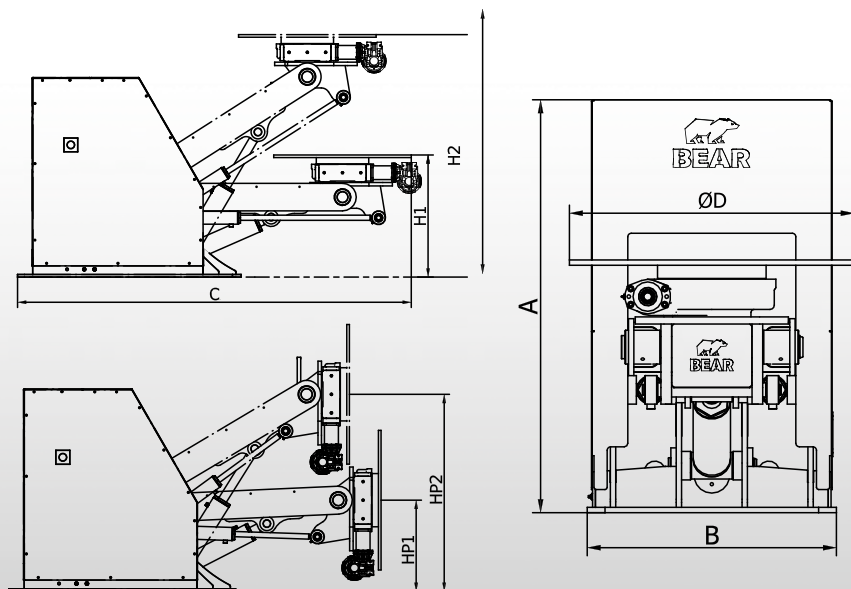
- Wired remote control
- Wireless remote control
- Wired foot pedal for table rotation
- Smooth table rotation adjustment
- Electric negative rotary clamp
- Arm length and shape
- Possibility of individual positioner configuration





Model	PX500	PX1000	PX2000	PX6000
Payload [kg]	500	1000	2000	6000
Table torque [Nm]	4320	4320	5580	6552
Table rotation speed [rpm]	0~3	0~3	0~3	0~3
Table rotation angle [°]	360	360	360	360
Positioner width <b>B</b> [mm]	600	600	700	1030
Positioner height <b>A</b> [mm]	1030	1030	1145	1515
Positioner length <b>C</b> [mm]	2050	2050	2290	3100
Working table diameter <b>D</b> [mm]	800	800	800	1200
Min. working table height from the ground <b>H1</b> [mm]	346	466	710	1121
Max. working table height from the ground <b>H2</b> [mm]	1359	1355	1410	2262
Weight [kg]	576	621	712	2565

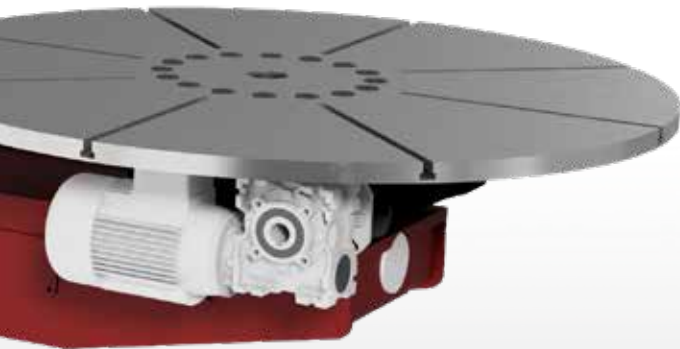
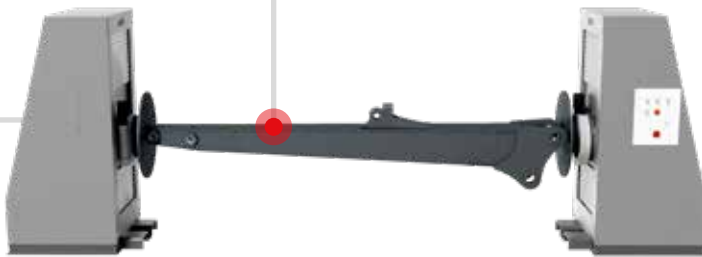
### Technical drawing







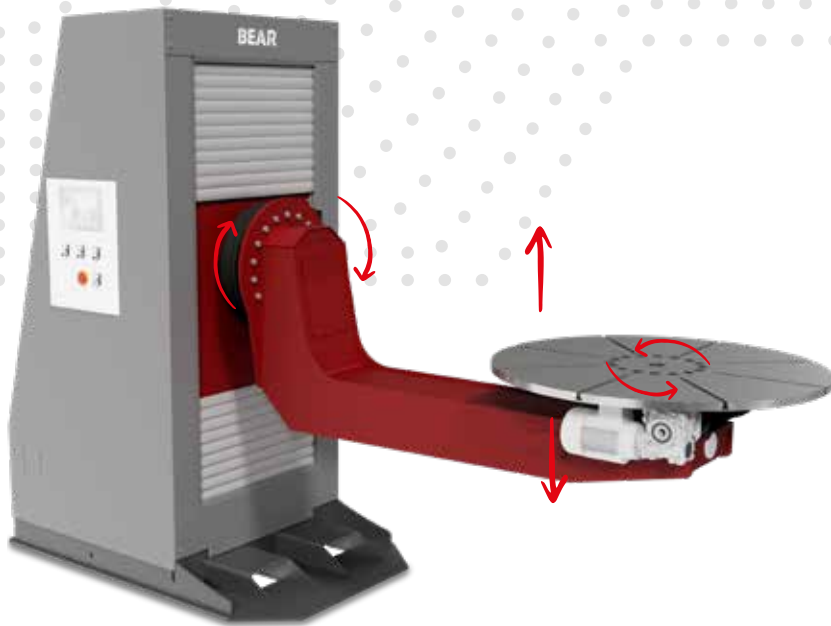
It is also available in the **TWIN** version



Series **SPR**

The SPR series is the most popular and most often chosen by customers line of our positioners.

Thanks to shifting the axis of rotation of the arm above the plane of the mounting plate, the mass of the load-bearing arm counterbalances the welded element. This technical solution gives a decisive advantage over the PX and BE series. It allows for arbitrary positioning of the welded element (including „upside down”).



### Standard Version

- Positioner powered by three-phase current
- Arm rotation by means of a hydraulic rotator
- Table rotation by means of an electric rotator
- Arm height adjustment using hydraulic cylinders
- Control of functions on the positioner housing

### Additional options

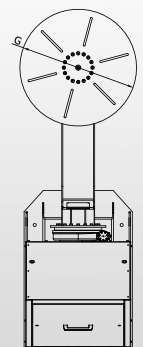
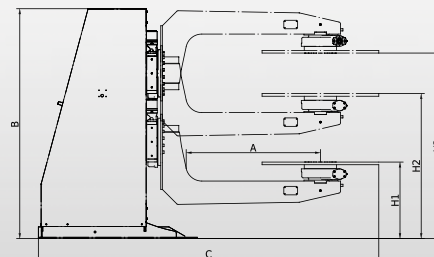
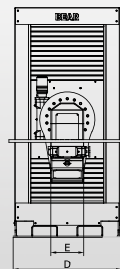
- Wired remote control
- Wireless remote control
- Foot pedal for table rotation
- Smooth table rotation adjustment
- Electric negative rotary clamp
- Arm length and shape
- Possibility of individual positioner configuration
- Control of functions using a teach pendant





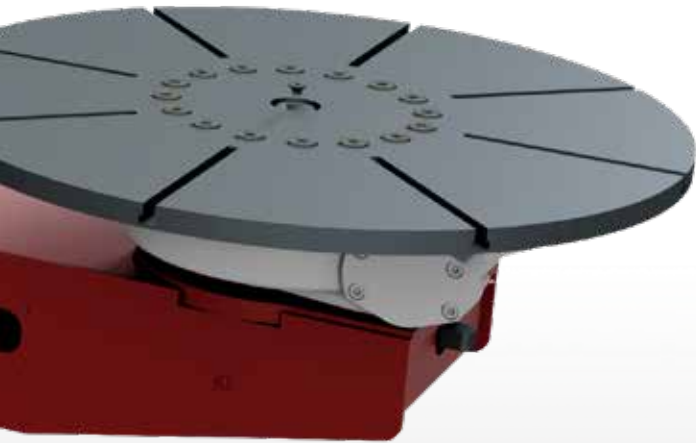
Model	SPR500	SPR1500	SPR2500	SPR4000
Load capacity [kg]	500	1500	2500	4000
Table torque [Nm]	4320	5080	6550	7690
Table rotational speed [rev/min]	0~3	0~3	0~3	0~3
Table rotation angle [°]	360	360	360	360
Positioner width <b>D</b> [mm]	900	1020	1020	1374
Positioner height <b>B</b> [mm]	1852	2153	2153	3160
Positioner length <b>C</b> [mm]	2664	3209	3209	3838
Working table diameter <b>G</b> [mm]	800	1000	1000	1200
Positioner arm width <b>E</b> [mm]	290	310	350	600
Distance from table axis to arm <b>A</b> [mm]	1000	1200	1200	1500
Min. working table height from base <b>H1</b> [mm]	525	555	555	870
Max. working table height from base <b>H2</b> [mm]	1155	1400	1400	2190
Max. working table height from base <b>H3</b> [mm]	1496	1712	1712	2590
Weight [kg]	1180	1681	1779	4022

### Technical drawing





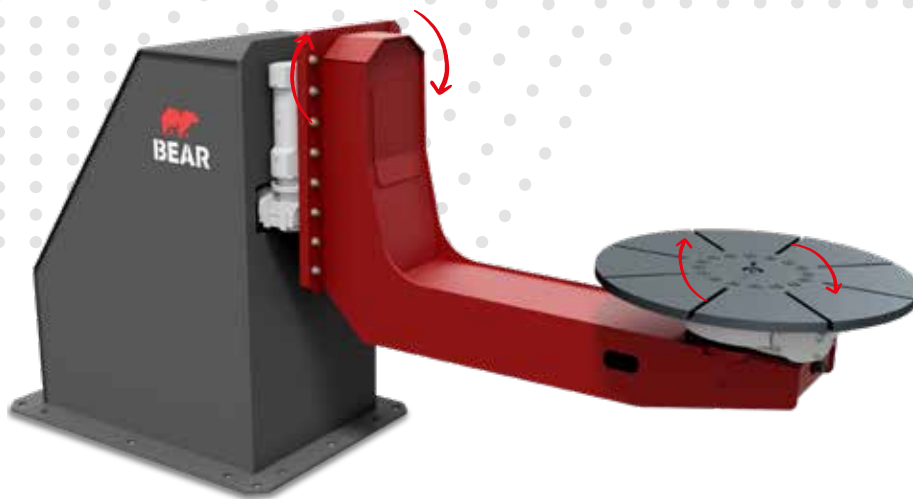
It is also available in the **TWIN** version



Series **BE**

The main advantage of the BE series positioners is to provide device functionality while maintaining price attractiveness.

The BE series welding manipulators allow for the safe rotation of elements to an optimal position for welding or assembly. The rotation is performed in two axes. The BE welding rotator is characterized by small dimensions, thus the device can easily fit practically anywhere in the factory. Thanks to the anchoring of positioners to the substrate, we achieve very high stability without limiting the workspace.



### Standard Version

- Positioner powered by three-phase current
- Rotation of the table and arm using an electric rotator
- Control of functions on the positioner housing

### Additional Options

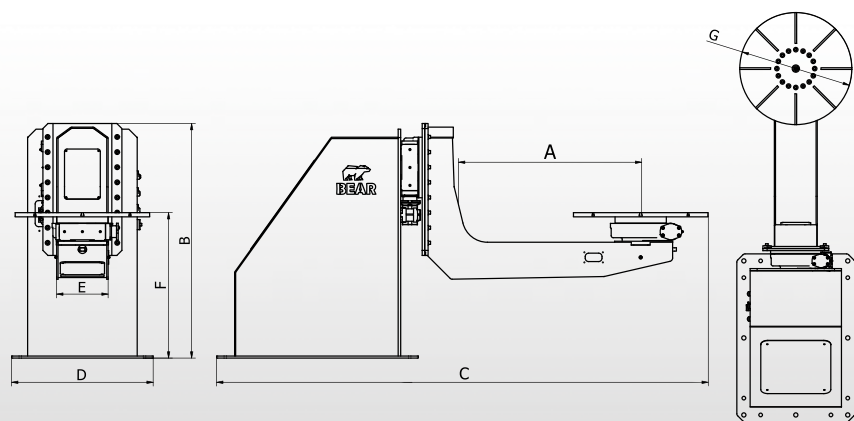
- Wired remote control
- Wireless remote control
- Foot pedal for table rotation
- Smooth table rotation adjustment
- Electric negative rotary clamp
- Arm length and shape
- Possibility of individual positioner configuration
- Control of functions using a teach pendant





Model	BE500	BE1000
Load capacity [kg]	500	1000
Table torque [Nm]	4320	4320
Table rotational speed [rev/min]	0~3	0~3
Table rotation angle [°]	360	360
Positioner width <b>D</b> [mm]	900	900
Positioner height <b>B</b> [mm]	1360	1360
Positioner length <b>C</b> [mm]	2923	2923
Working table diameter <b>G</b> [mm]	800	800
Positioner arm width <b>E</b> [mm]	290	310
Distance from table axis to arm <b>A</b> [mm]	1000	1000
Working table height from base <b>F</b> [mm]	800	800
Weight [kg]	750	810

### Technical drawing









## Series **RO**

The RO series positioners are adapted to work with a welding robot.

---

The rotating column is always made to individual customer order and is adjusted specifically to the element that will be welded. This allows for the automation of the welding process for specific details.



### Standard Version

- Positioner powered by three-phase current
- Rotation of the axis and arm using servo drives
- Control of functions on the positioner housing

### Additional Options

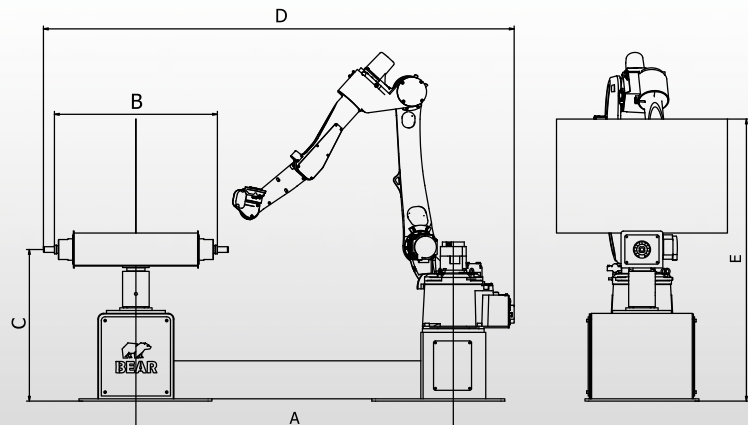
- Wired remote control
- Smooth table rotation adjustment
- Electric negative rotary clamp
- Arm length and shape
- Possibility of individual positioner configuration
- Control of functions using a teach pendant





Model	R0700	R01500
Load capacity [kg]	700	1500
Arm torque [Nm]	1350	2100
Table rotational speed [obr/min]	0~13	0~10
Table rotation angle [°]	+/-360	+/-360
Axis torque [Nm]	450	700
Axis rotational speed [obr/min]	0~50	0~50
Axis rotation angle [°]	360	360
Positioner height <b>E</b> [mm]	1485	1535
Base length of positioner <b>D</b> [mm]	2478	2528
Positioner arm width <b>B</b> [mm]	858	1008
Distance from table axis to arm <b>A</b> [mm]	1671	1821
Working table height from base <b>C</b> [mm]	798	848
Weight [kg]	960	1190

### Technical drawing







## Series **RT**

The RT series positioners are adapted to work with a welding robot.

---

The construction of the rotating table allows for mounting elements of various dimensions. Using this series allows to automate the welding process in a company.



### Standard Version

- Positioner powered by three-phase current
- Rotation of the axis and arm using servo drives
- Control of functions on the positioner housing

### Additional Options

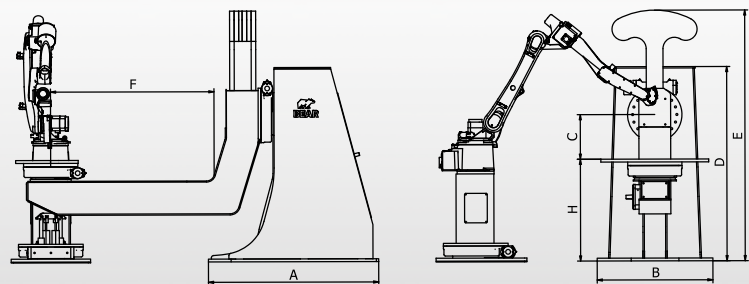
- Wired remote control
- Smooth table rotation adjustment
- Electric negative rotary clamp
- Arm length and shape
- Possibility of individual positioner configuration
- Control of functions using a teach pendant





Model	RT1000	RT2000
Load capacity [kg]	1000	2000
Arm torque [Nm]	4320	6720
Arm rotational speed [rev/min]	0~5	0~5
Arm rotation angle [°]	+/-360	+/-360
Table torque [Nm]	2820	3460
Table rotational speed [obr/min]	0~10	0~10
Table rotation angle [°]	360	360
Positioner width <b>B</b> [mm]	1020	1020
Total height of the positioner <b>E</b> [mm]	2210	2210
Base length of positioner <b>A</b> [mm]	1500	1500
Distance from table to rotation axis <b>C</b> [mm]	393	393
Positioner housing height <b>D</b> [mm]	1712	1712
Distance from table axis to arm <b>F</b> [mm]	1440	1440
Working table height from base <b>H</b> [mm]	897	897
Weight [kg]	3050	3310

### Technical drawing





Do you have a question?

**+48 784 692 849**

**+48 606 981 703**

**+48 668 793 236**

**+48 664 939 883**

Read more about us

**[WWW.BEARWELDING.EU](http://WWW.BEARWELDING.EU)**